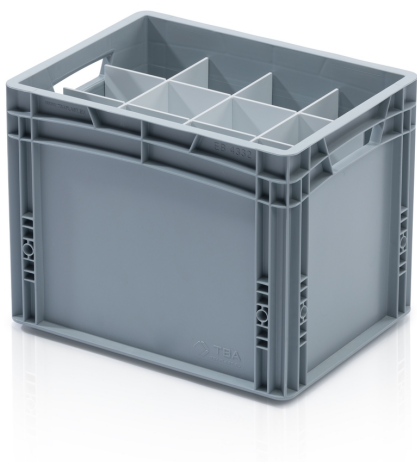


## EURO crate partition 40x30x32 - long



Crate partitions are an essential element for the organisation and protection of various transported items. These practical dividers allow the safe transport and storage of various materials and products. With the help of the dividers, you can divide the Euro crates in any way you like. The partitions have a pre-milled drawer system. At least one long and one short partition is required for the partitions to function.

**Product code:** 967418

**Number of pieces on the pallet:** 200

## Technical specification

### Features:

Colour	white
Material	HPS
Weight	0.32 kg


### Dimensions

Length	36.6 cm
Width	0.3 cm
Height	30 cm

### Specification

Designed for crates with a height of 32 cm.

 [info@tbaplast.cz](mailto:info@tbaplast.cz)

 + 420 565 534 000