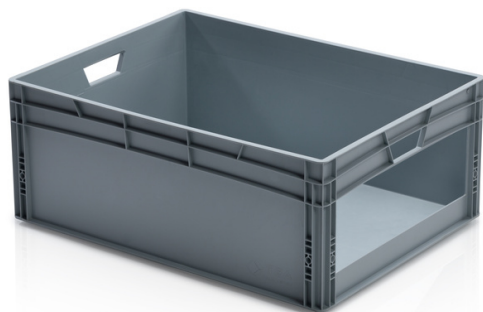


## EURO crate 80x60x32 with open front



The Euro crate a universal workhorse in all branches of industry. Cold, contact heat, acid and lye resistant. Plastic boxes made of top quality polypropylene. Optimized for usage in automatized logistics (suitable for use on moving and roller conveyors). Supports imprinting.

**Product code:** 965824

**Number of pieces on the pallet:** 14



## Technical specification

### Features:

Colour	grey
Material	PP
Volume	138 l
Weight	5.1 kg

### Specification

Deposite window size: 50 x 15,5 cm

Due to the use of various raw materials, it is not possible to prevent fluctuations in color shades. All technical parameters of the products, including their dimensions and weights, are subject to changes resulting from testing conditions and manufacturing technology. No legally binding guarantees of specific properties can be inferred from the information obtained.

We reserve all rights, including the possibility of unforeseen errors and subsequent adjustments. We emphasize that the provided technical data is for informational purposes only and may be subject to changes without prior notice.

### Dimensions

Length	80 cm
Widht	60 cm
Height	32 cm

### Internal dimensions

Internal dimension length	77 cm
Internal dimension width	57 cm
Internal dimension height	31.5 cm