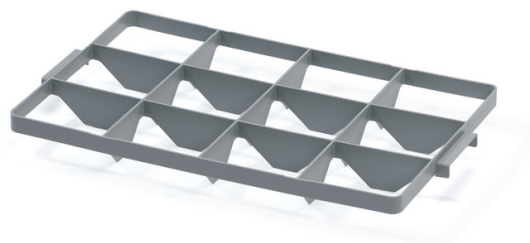


Crate insert 12 - top



The crate inserts are designed so that the bottom loosely sticks to the surface, while the inserts for the top are fitted into the handles by 2 bars at the front sides. Suitable for washing, transport and storage of glasses. Safe glasses storage due to a balanced division into compartments.

Product code: 965925

Number of pieces on the pallet: 256

Number of pieces in the package: 16



Technical specification

Features:

Colour	grey
Material	PP
Weight	0.32 kg


Specification

12 holes 13.7 x 11.7 cm

Dimensions

Length	60 cm
Width	40 cm
Height	2 cm

 info@tbaplast.cz

 + 420 565 534 000