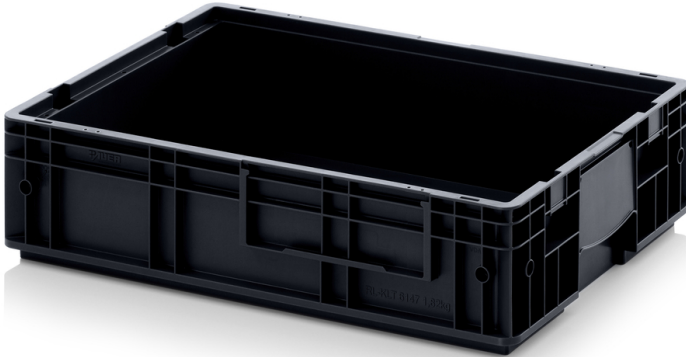


Crate ESD RL-KLT 6147



KLT crates with a smooth sub-floor and waterdrainage holes in the can ideally be used for areas where liquids shall be drained off. Stable impact surfaces on the front and the sides allow the use in mini-load system; lifting slots the vertical retrieval and special holes the fixing of lid sealings. Perfectly usable for manual handling due to their ergonomic grips at the front walls and their practical support grips on the side walls.

Product code: 968079

Number of pieces on the pallet: 80

Technical specification

Features:

Colour	black
Material	ESD
Weight	1.82 kg

Specification

Flow/surface resistance: $10^4 < 10^{10}$ Ohm


Dimensions

Length	60 cm
Widht	40 cm
Height	14.7 cm

Internal dimensions

Internal dimension length	54.4 cm
Internal dimension width	35.9 cm
Internal dimension height	12.9 cm

 info@tbaplast.cz

 + 420 565 534 000